

CRAWFORDSBURN VILLAGE BROW

Crawfordsburn



SITE 23

Computer visual.

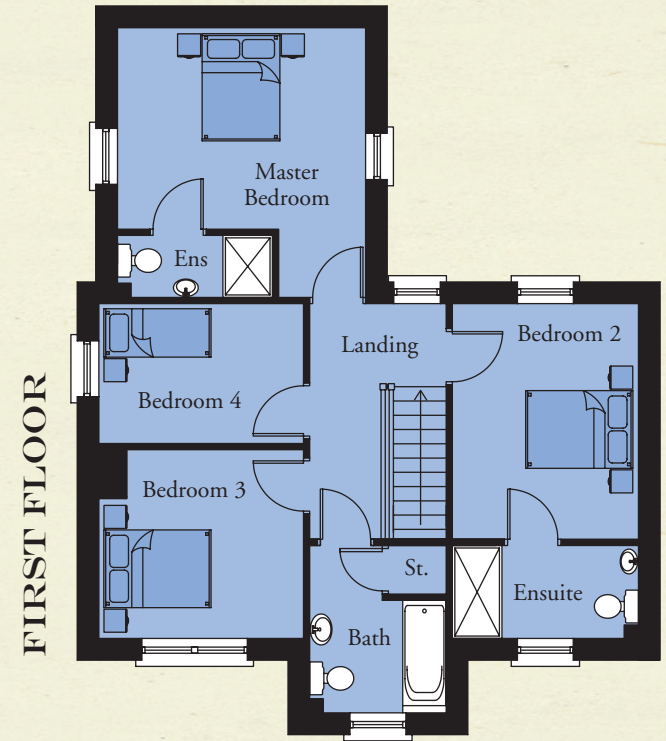
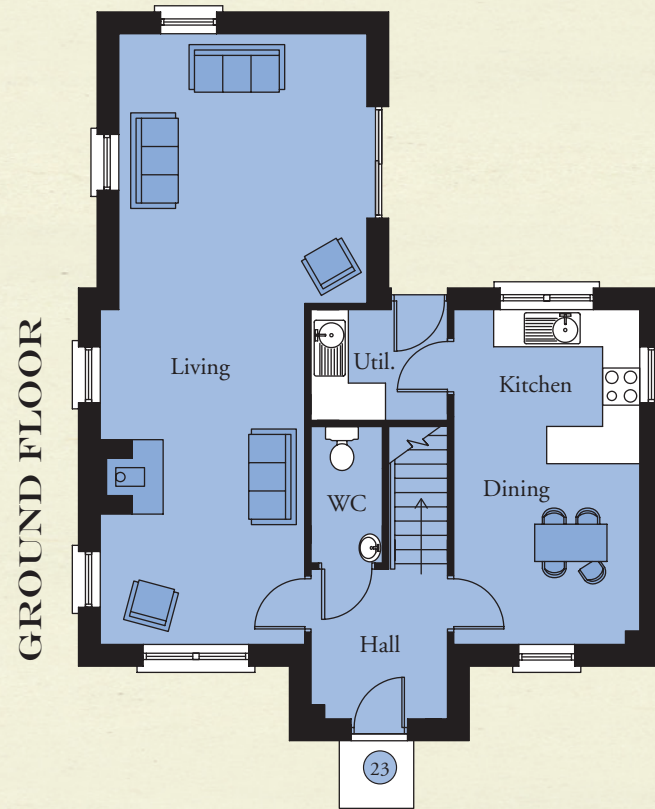
SITE 23

GROUND FLOOR

Entrance Hall with separate WC	
Lounge	17'9" x 10'10"
Family Room	14'3" x 13'1"
Kitchen / Dining	17'9" x 9'10"
Utility Room	7'3" x 3'9"

FIRST FLOOR

Master Bedroom	12'6" x 9'10"
Ensuite	9'10" x 4'11"
Bedroom 2	10'10" x 10'0"
Bedroom 3	10'10" x 7'5"
Bedroom 4	13'1" x 10'8" min
Ensuite	8'2" x 3'3"
Bathroom	8'10" x 7'3"



**TOTAL FLOOR AREA:
1450 SQ. FT. APPROX.**

**TEMPLETON
ROBINSON**

NORTH DOWN

54 High Street
Holywood
Co Down
BT18 9AE

028 9042 4747

WWW.TEMPLETONROBINSON.COM



**CRAWFORDSBURN
VILLAGE BROW**

CGI computer visual is for illustrative purposes only. Floorplans are not to scale and all measurements are approximate.