

CRAWFORDSBURN VILLAGE BROW

Crawfordsburn



SITES 9 - 10

Computer visual.

SITES 9 - 10

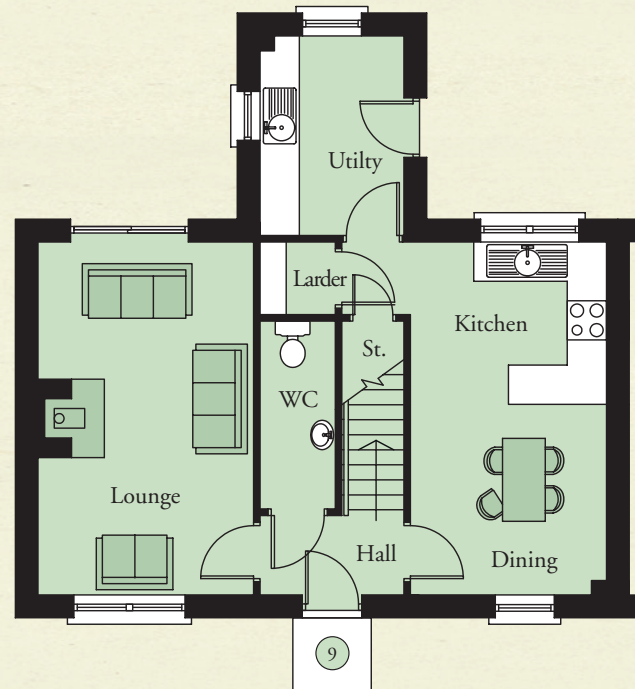
GROUND FLOOR

Entrance Hall with separate WC	
Lounge	17'9" x 10'10"
Kitchen / Dining	17'9" x 9'10"
Utility	10'0" x 7'3"

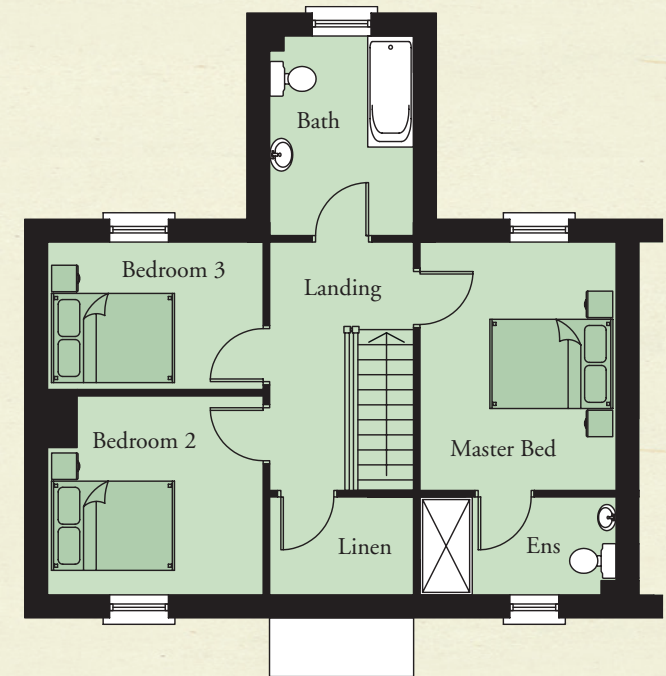
FIRST FLOOR

Master Bedroom	12'6" x 9'10"
Ensuite	9'10" x 4'11"
Bedroom 2	10'10" x 10'0"
Bedroom 3	10'10" x 7'5"
Bathroom	10'0" x 7'3"
Linen	7'3" x 4'11"

GROUND FLOOR

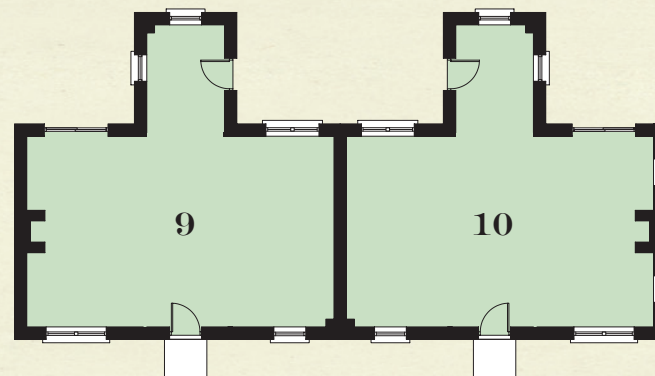


FIRST FLOOR



**TOTAL FLOOR AREA:
1160 SQ. FT. APPROX.**

KEY - SITES 9-10



**TEMPLETON
ROBINSON**

NORTH DOWN
54 High Street
Holywood
Co Down
BT18 9AE

028 9042 4747
WWW.TEMPLETONROBINSON.COM



**CRAWFORDSBURN
VILLAGE BROW**

CGI computer visual is for illustrative purposes only. Floorplans are not to scale and all measurements are approximate.