

CRAWFORDSBURN VILLAGE BROW

Crawfordsburn



SITES 5 - 6

Computer visual.

SITES 5 - 6

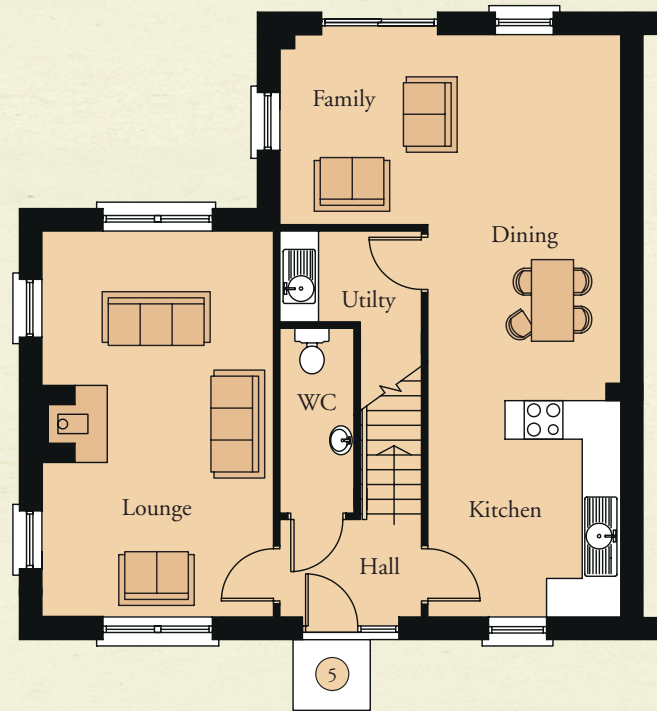
GROUND FLOOR

Entrance Hall with separate WC	
Lounge	19'8" x 11'10"
Kitchen / Dining	19'8" x 9'10"
Family	17'5" x 9'8"

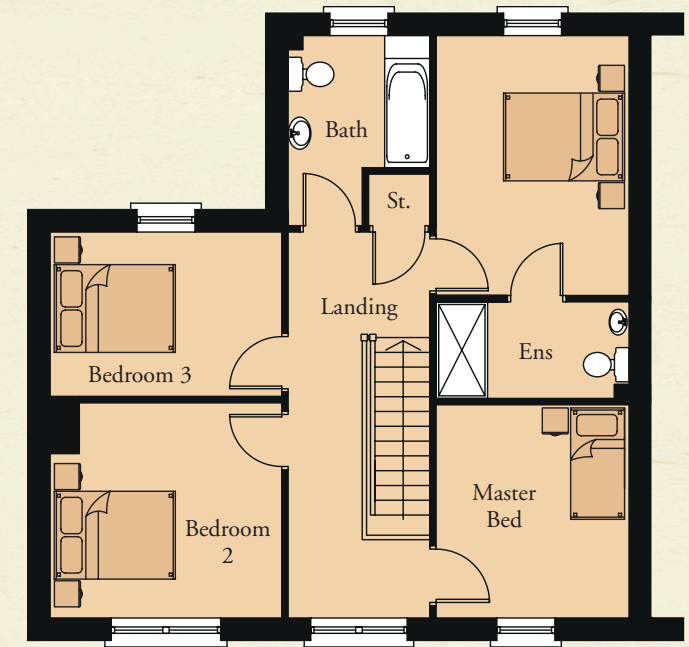
FIRST FLOOR

Master Bedroom	13'3" x 9'10"
Ensuite	9'10" x 4'11"
Bedroom 2	11'10" x 11'0"
Bedroom 3	11'10" x 8'5"
Bedroom 4	10'11" x 9'10"
Bathroom	7'3" x 6'9" min

GROUND FLOOR

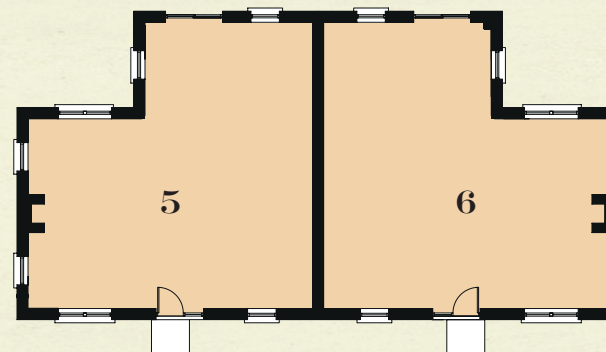


FIRST FLOOR



**TOTAL FLOOR AREA:
1500 SQ. FT. APPROX.**

KEY - SITES 5-6



NORTH DOWN
54 High Street
Holywood
Co Down
BT18 9AE

028 9042 4747
WWW.TEMPLETONROBINSON.COM



**CRAWFORDSBURN
VILLAGE BROW**

CGI computer visual is for illustrative purposes only. Floorplans are not to scale and all measurements are approximate.