

BALLYNORTHLAND
MANOR

DUNGANNON PARK



An exceptional collection
of uniquely designed
residences by **Strand Homes**.



Contents

A Story to Tell	6	Quinn Cottage	11	Floor Plan Overviews	20
The Local Area	8	Coach House	12	Architect	22
Site Layout	10	Farm House	14	Luxury Specification	24
		The Falcon	15	Location Maps	26
		The Stables	16	Team	28
		The Demesne	18		
		The Fort	19		



Full of charm
and steeped in a
wealth of history



A passionate
restoration



With close connections to the Earls of Ranfurly, Ballynorthland Manor is a development with a story to tell. The original building has been tastefully restored and is now home to a collection of uniquely designed homes.

Nestled around a beautiful courtyard setting with elevated views of the glistening waters of Dungannon Lake and the surrounding 70 acre parkland oasis, and also with idyllic viewpoints of surrounding townland and countryside, these new homes are a place of relaxation and comfort.

Whilst the exteriors are in keeping with the traditional finish of the original property, the home interiors are energy-efficient with high quality fixtures and fittings throughout.

Ballynorthland Manor is conveniently located for easy access to a variety of local amenities; cafés, restaurants and delis, to health and leisure facilities and boutiques at the Linen Green.

These exclusive new residences would be ideal for homeowners who want the full package: a stunning home in a unique oasis of calm, with the convenience of being located only 1 mile from the Motorway making it a straight forward car journey to anywhere across the province.



A stunning piece of history in a beautiful setting amongst mature woodland with a multitude of tree varieties



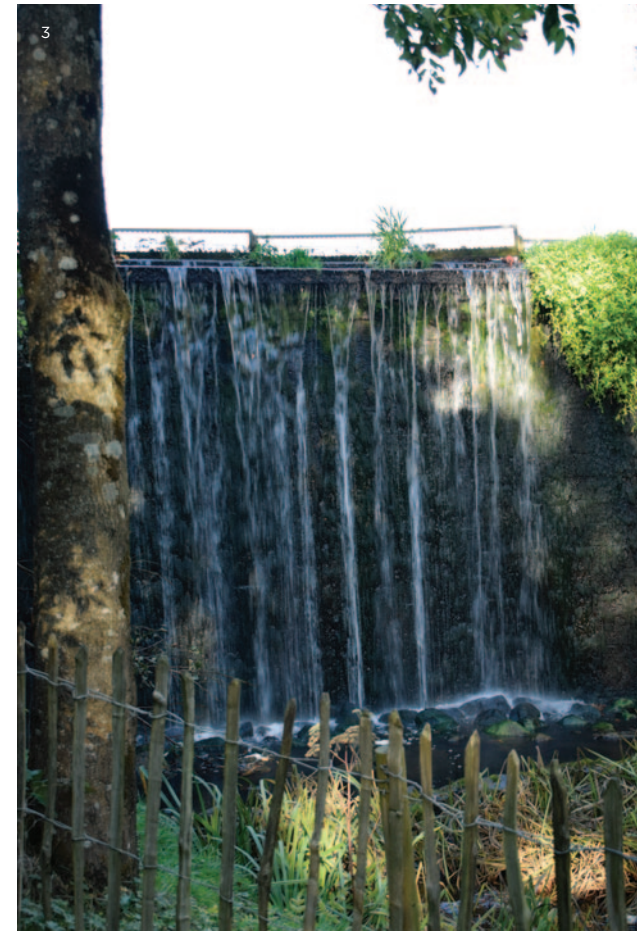
Located in the historic County Tyrone, the town of Dungannon offers homeowners something truly unique. Full of charm and steeped in a wealth of history, you'd be hard pushed to find a location better than this one.

From its enchanting town centre and colourful streets to its regular Farmer's and Flower Markets offering local and fresh produce, it's easy to see why Dungannon has earned Ulster in Bloom's prestigious "best kept town award" on numerous occasions.

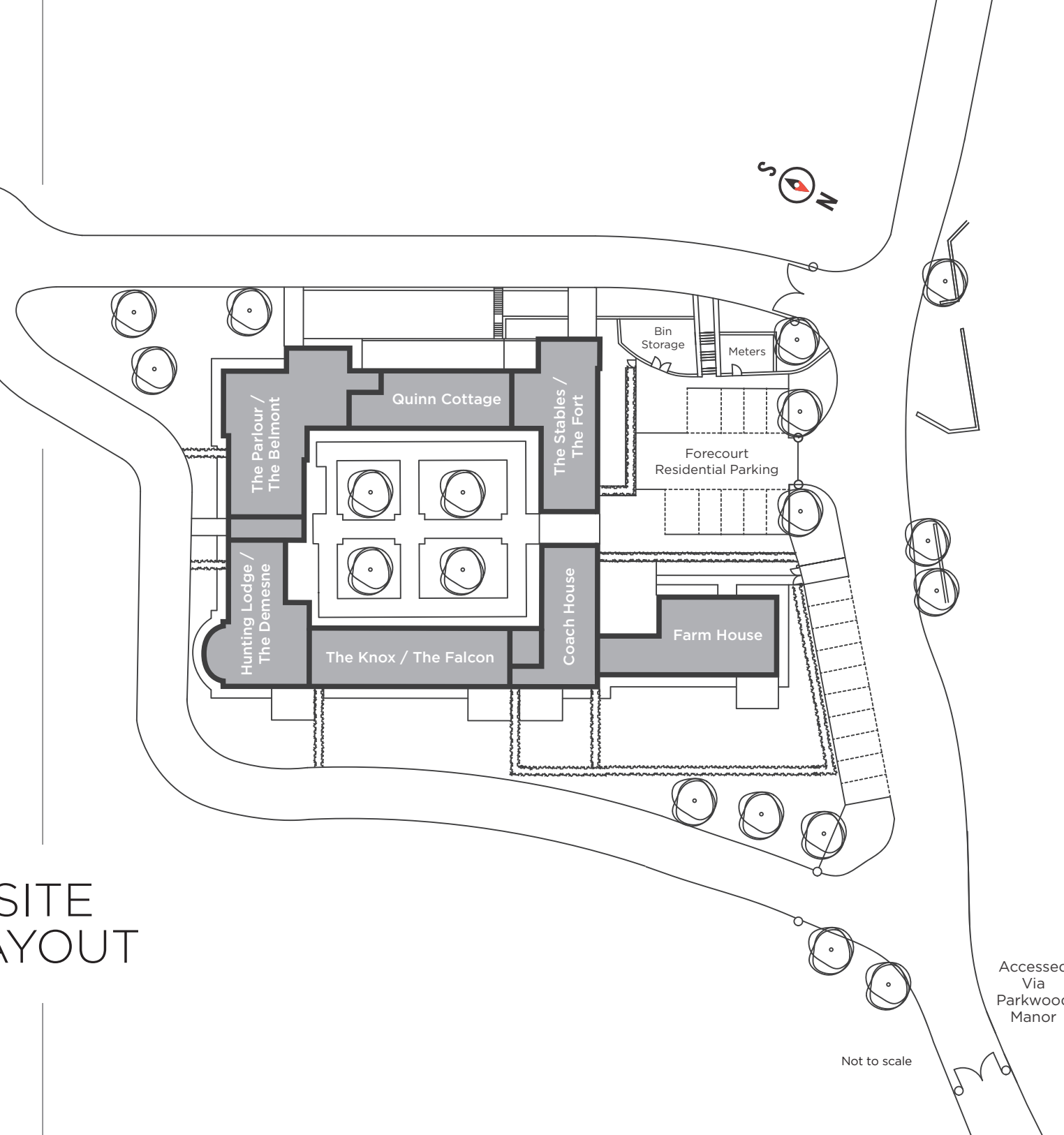
Whether it's exploring the ruins of the ancient capital of Ulster known locally as Castle Hill, hitting a ball from the lush fairways of Dungannon Golf Club, or admiring the abundance of wildlife found in Peatlands Park, take the opportunity to escape the hustle and bustle of everyday life. What's more, homeowners can get lost in history when visiting Benburb Castle, Beaghmore Stone Circles and Tullaghoge Fort.

1. Beaghmore Stone Circles
2. Linen Green, Moygashel
3. Waterfall, Dungannon Park
4. Chaffinch, Dungannon Park
5. Hill of O'Neill, Dungannon

You'd be hard pushed to find a location better than this one



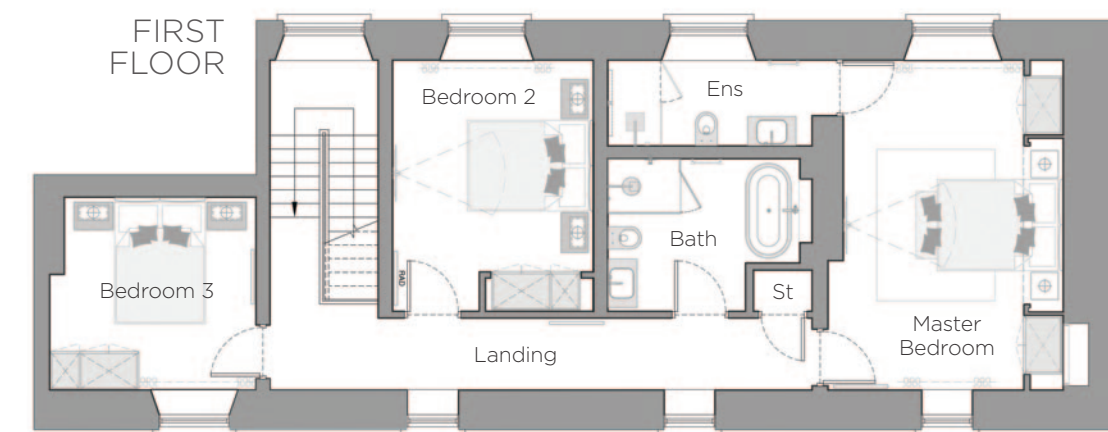
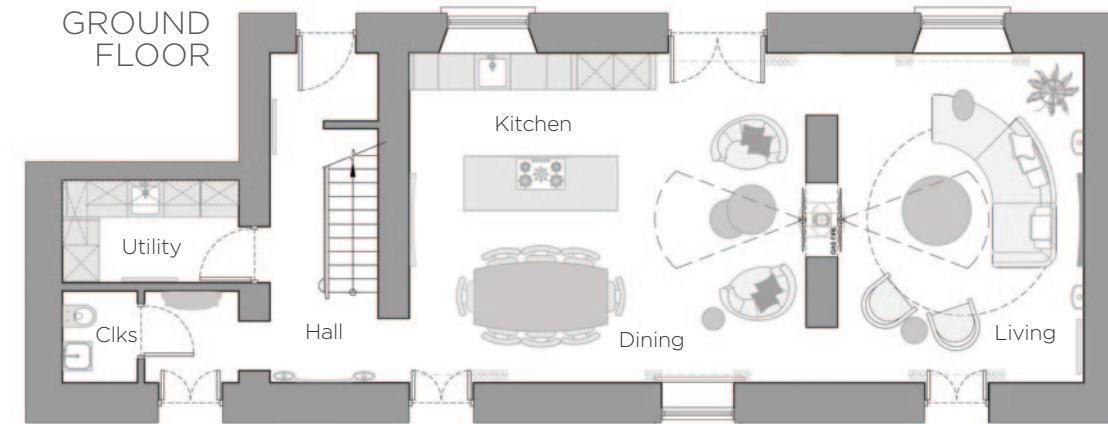
SITE LAYOUT



Not to scale

Accessed Via Parkwood Manor

QUINN COTTAGE



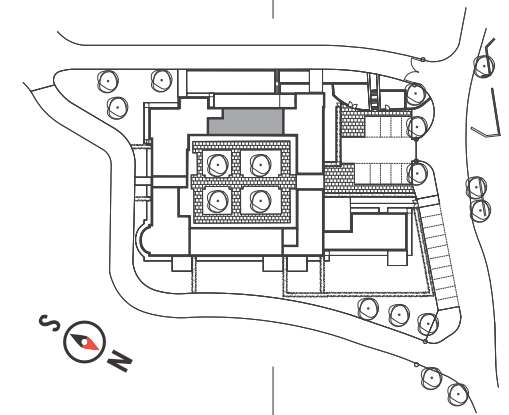
GROUND FLOOR

Living	17'8" x 15'0"
Kitchen / Dining	21'5" x 17'9"
Utility Room	9'5" x 5'4"
Cloakroom	4'9" x 4'0"

FIRST FLOOR

Master Bedroom	17'9" x 12'8"
Ensuite	12'6" x 4'6"
Bedroom 2	11'1" x 10'3"
Bedroom 3	13'5" x 10'9"
Bathroom	10'4" x 8'1"

Total Floor Area 1,797 ft² Approx.



All measurements are approximate and taken from the widest points of each room.

COACH HOUSE

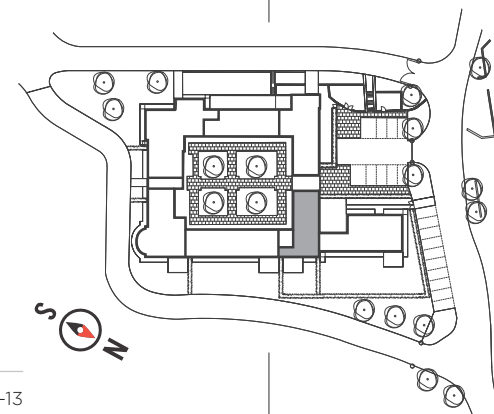
GROUND FLOOR

Living / Kitchen	27'0" x 17'5"
Bedroom 4	13'4" x 10'8"
Boot Room	11'1" x 4'8"
Cloakroom	6'4" x 4'1"

FIRST FLOOR

Master Bedroom	18'7" x 12'3"
Ensuite	10'4" x 4'7"
Bedroom 2	13'4" x 10'3"
Bedroom 3	13'4" x 10'7"
Utility Room	10'8" x 7'0"
Bathroom	9'5" x 6'8"

Total Floor Area 1,980 ft² Approx.



All measurements are approximate and taken from the widest points of each room.



Actual photographs of the Kitchen from The Parlour



FARM HOUSE

GROUND FLOOR

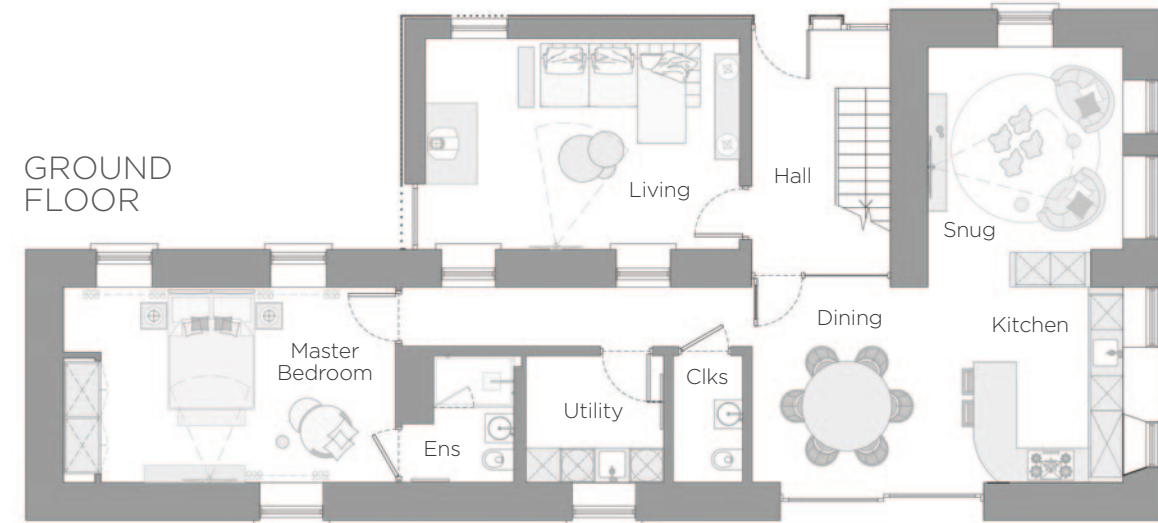
Living	17'8" x 11'9"
Kitchen / Dining	21'1" x 13'1"
Snug	11'5" x 11'1"
Utility Room	7'8" x 7'2"
Master Bedroom	18'8" x 11'1"
Ensuite	7'2" x 6'4"
Cloakroom	7'2" x 4'0"

FIRST FLOOR

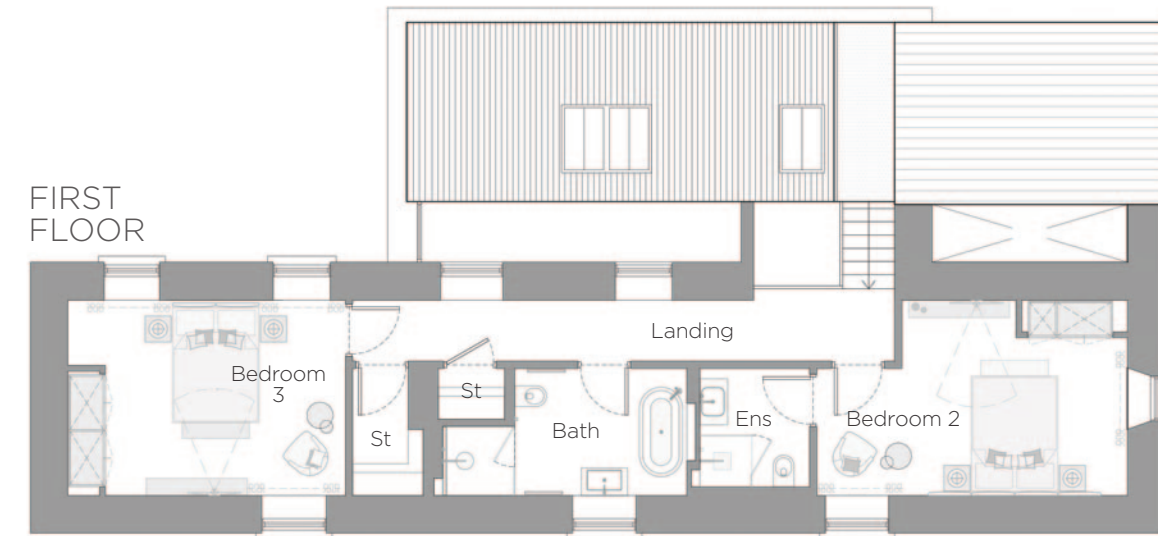
Bedroom 2	17'6" x 11'1"
Ensuite	6'7" x 6'2"
Bedroom 3	15'8" x 11'1"
Bathroom	13'9" x 7'2"

Total Floor Area 1,904 ft² Approx.

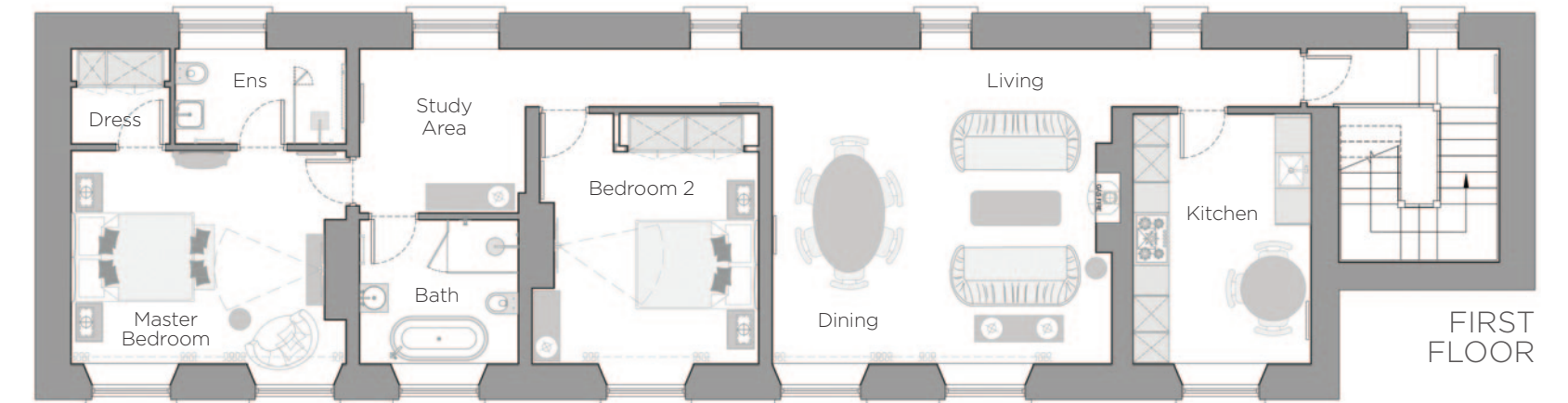
GROUND FLOOR



FIRST FLOOR



All measurements are approximate and taken from the widest points of each room.



THE FALCON

GROUND FLOOR

Entrance Hall

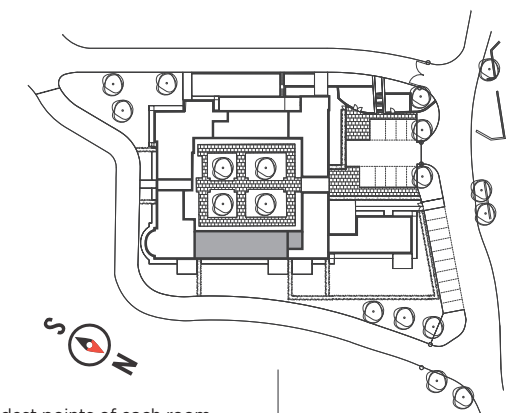
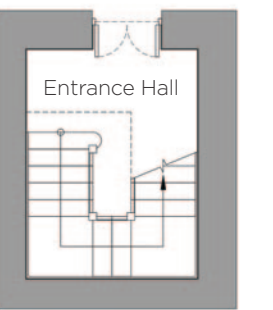
FIRST FLOOR

Living / Dining	18'8" x 17'6"
Kitchen	13'9" x 9'9"
Study	9'2" x 9'1"
Master Bedroom	15'3" x 11'8"
Ensuite	9'5" x 5'3"
Dressing	5'5" x 5'3"
Bedroom 2	13'9" x 12'7"
Bathroom	8'8" x 7'10"

Total Floor Area 1,439 ft² Approx.

All measurements are approximate and taken from the widest points of each room.

GROUND FLOOR

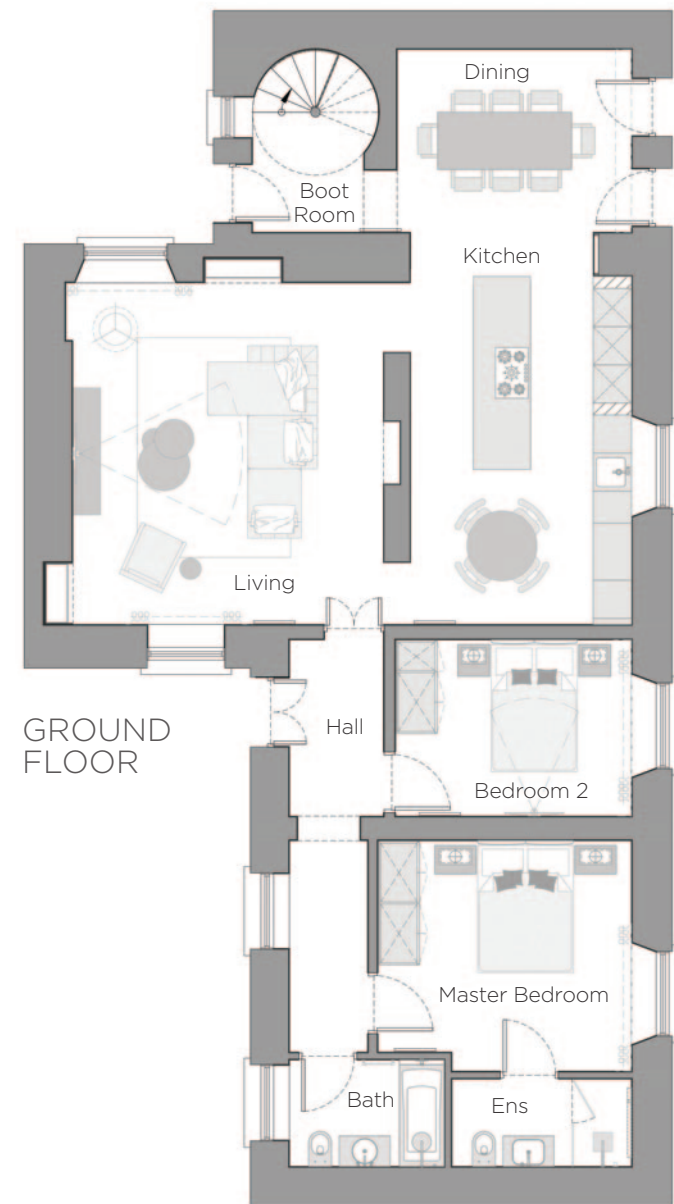


THE STABLES

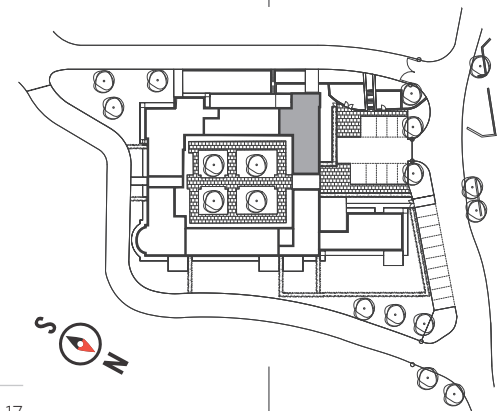
GROUND FLOOR

Entrance Hall	
Living	17'6" x 15'10"
Kitchen	17'9" x 11'5"
Dining	12'1" x 11'7"
Boot Room	8'4" x 6'2"
Master Bedroom	13'1" x 11'9"
Ensuite	9'2" x 4'5"
Bedroom 2	12'1" x 9'1"
Bathroom	7'10" x 5'5"

Total Floor Area 1,211 ft² Approx.



All measurements are approximate and taken from the widest points of each room.



Actual photographs of The Stables



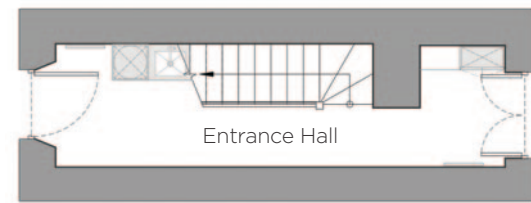
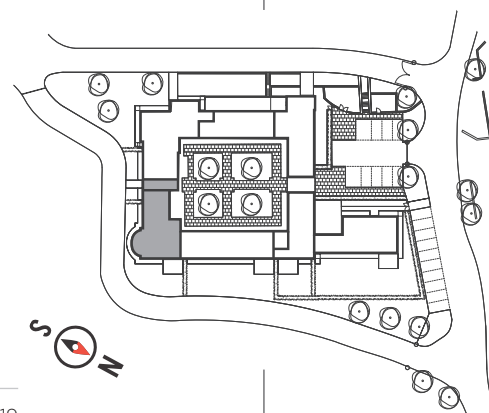
THE DEMESNE

GROUND FLOOR
Entrance Hall / Utility Area

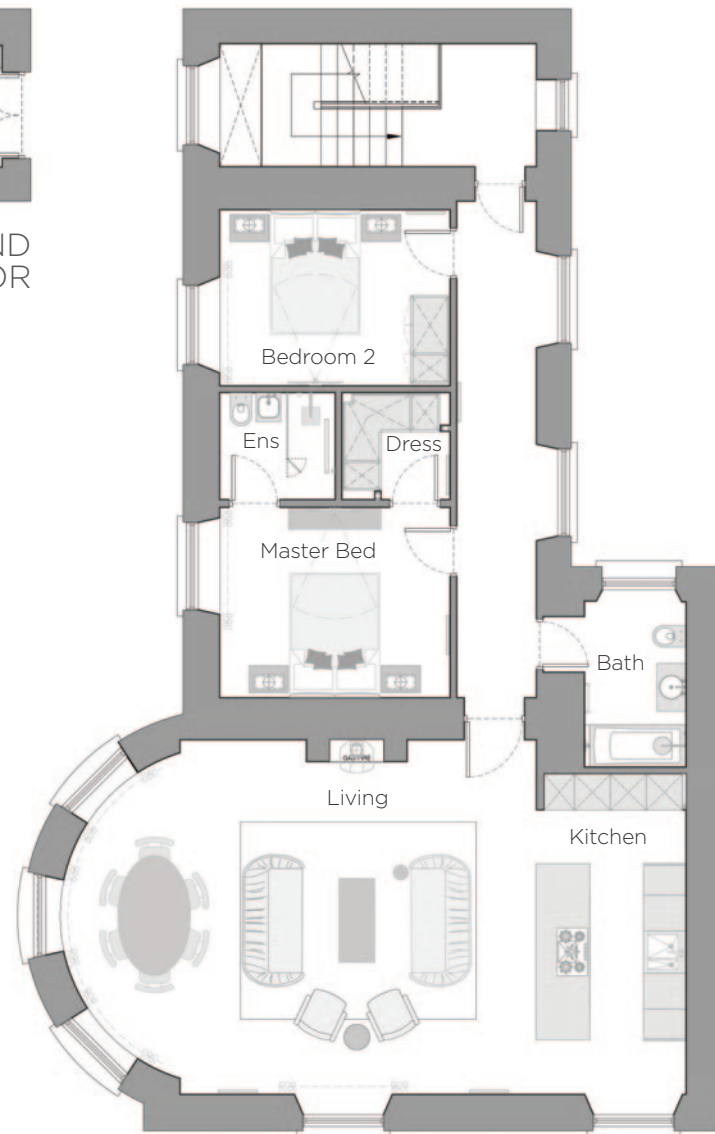
FIRST FLOOR

Living / Kitchen Max	34'2" x 19'4"
Master Bedroom	12'6" x 10'4"
Ensuite	6'3" x 3'9"
Dressing	5'9" x 5'8"
Bedroom 2	12'6" x 9'6"
Bathroom	9'1" x 5'5"

Total Floor Area 1,520 ft² Approx.



GROUND FLOOR



FIRST FLOOR

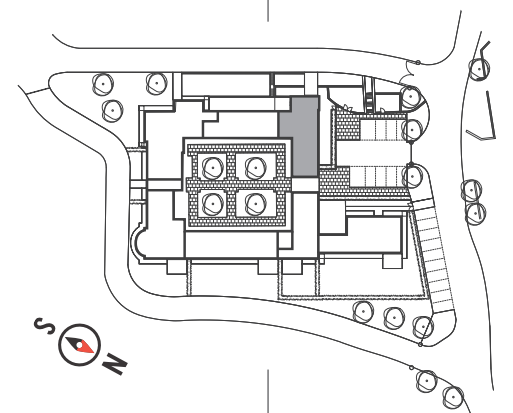
All measurements are approximate and taken from the widest points of each room.

THE FORT

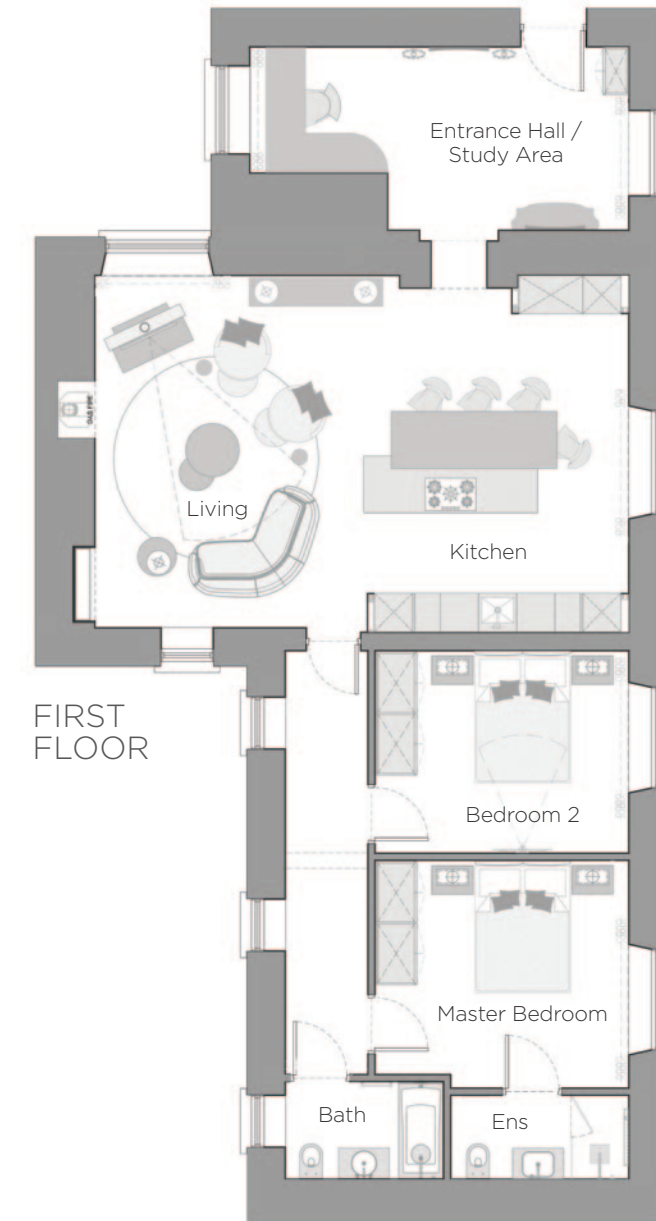
FIRST FLOOR

Hall / Study Area	19'5" x 9'5"
Living / Kitchen	27'5" x 18'4"
Master Bedroom	13'1" x 11'7"
Ensuite	9'2" x 4'3"
Bedroom 2	13'1" x 11'7"
Bathroom	8'2" x 5'0"

Total Floor Area 1,238 ft² Approx.



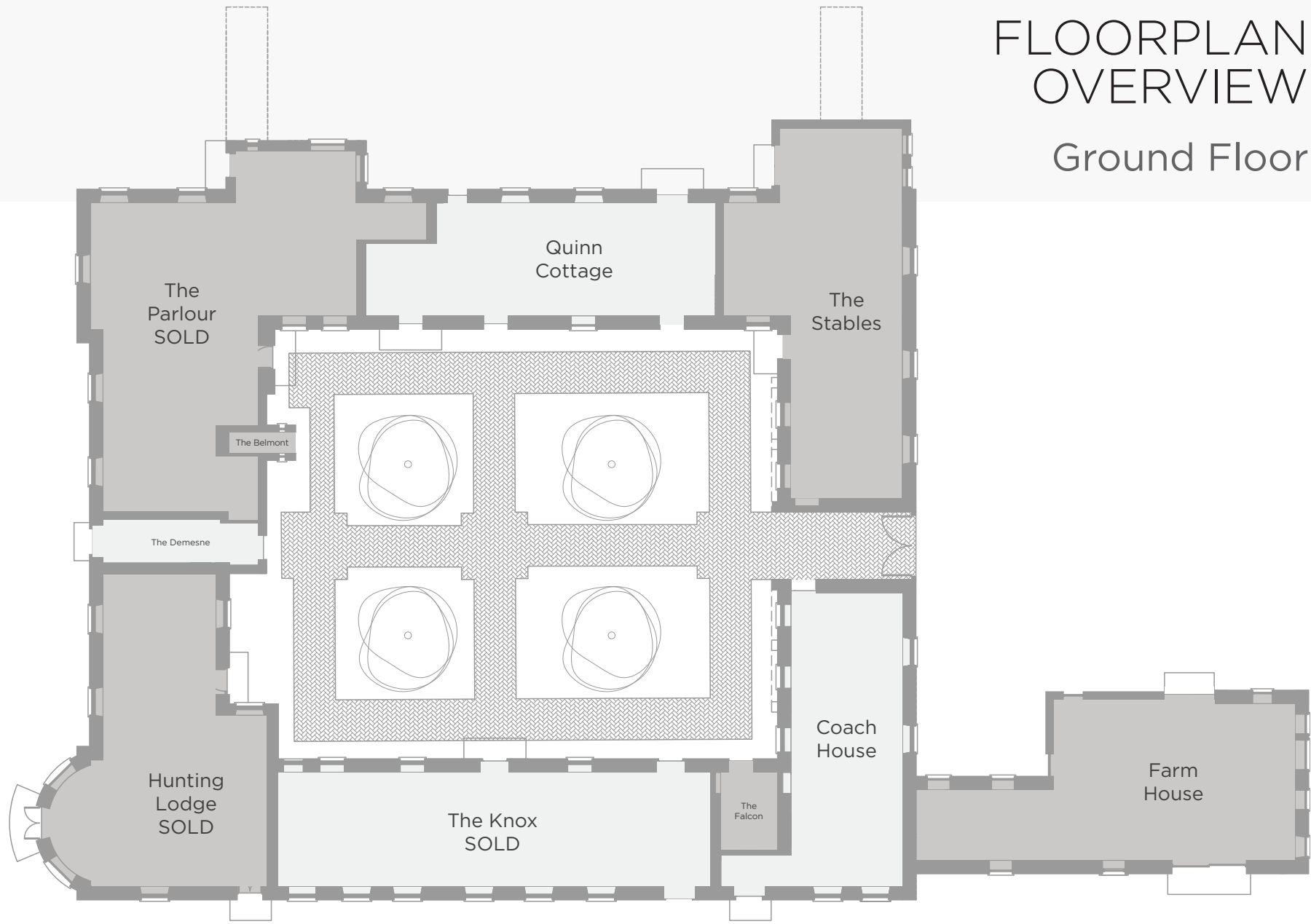
Actual photograph of The Fort



FIRST FLOOR

All measurements are approximate and taken from the widest points of each room.

FLOORPLAN
OVERVIEW
Ground Floor



FLOORPLAN
OVERVIEW
First Floor



A striking blend of historic beauty with luxurious, contemporary finishes

Warwick Architects is a multi-award winning practice located in Templepatrick, County Antrim, Northern Ireland.

The practice was established in 2000 by Emily and Barry Warwick and is renowned for designing some of the most exclusive homes in Northern Ireland.

Works also included the sympathetic conversion and extension of many listed buildings in Northern Ireland.



Actual photograph of The Fort



Photograph of the courtyard at Ballynorthland Manor

All in the detail

Kitchen & Utility Room (where applicable)

- Contemporary style kitchens
- Solid worktops
- Luxury appliances to include 4 ring induction hob, separate oven, integrated fridge, freezer and dishwasher
- Atmospheric lighting
- Kitchen / utility area plumbed for washing machine and tumble drier (where applicable)

Bathroom & Ensuite

- Luxurious tiled finishes to bathroom and ensuite
- Contemporary sanitary ware

Flooring

- Luxurious carpets
- Engineered hardwood planked flooring

Internal

- Panelled, painted timber internal doors with period ironmongery
- Energy efficient gas fired central heating system
- Woodburning or gas stove (where applicable)
- Charming period features

External

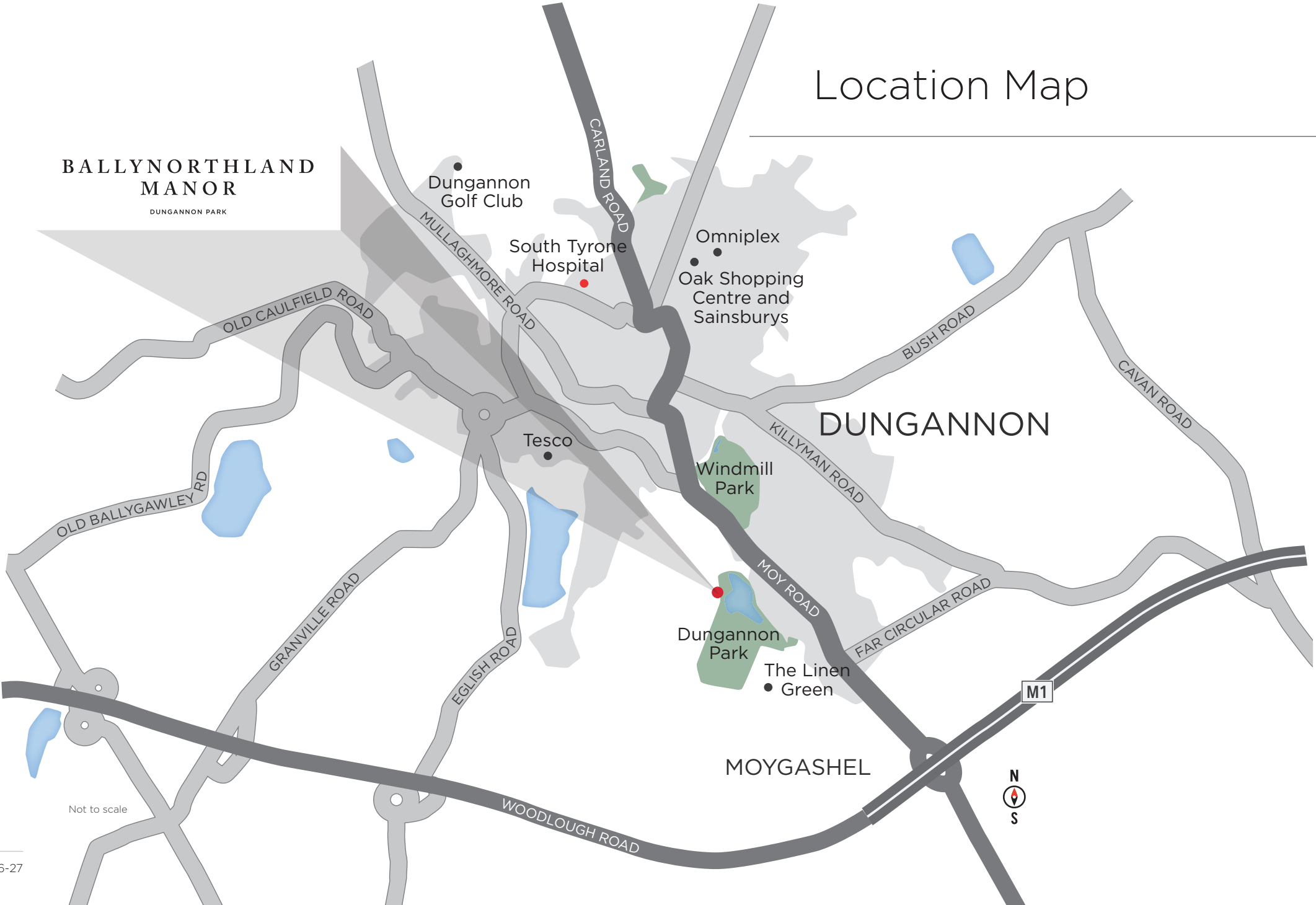
- Traditional stone construction with original feature arches and round windows
- A feature courtyard with hard and soft landscaping
- Exterior landscaping of communal areas with shrubs, planting, hedges and lawns
- Sliding sash windows with period style wooden shutters
- Electric entrance gate to private estate with fobs and codes provided to residents
- Perimeter timber fencing and estate railing
- Feature external lighting
- Allocated parking spaces
- Resident's management company to provide general management and maintenance of development

Actual photographs of The Stables

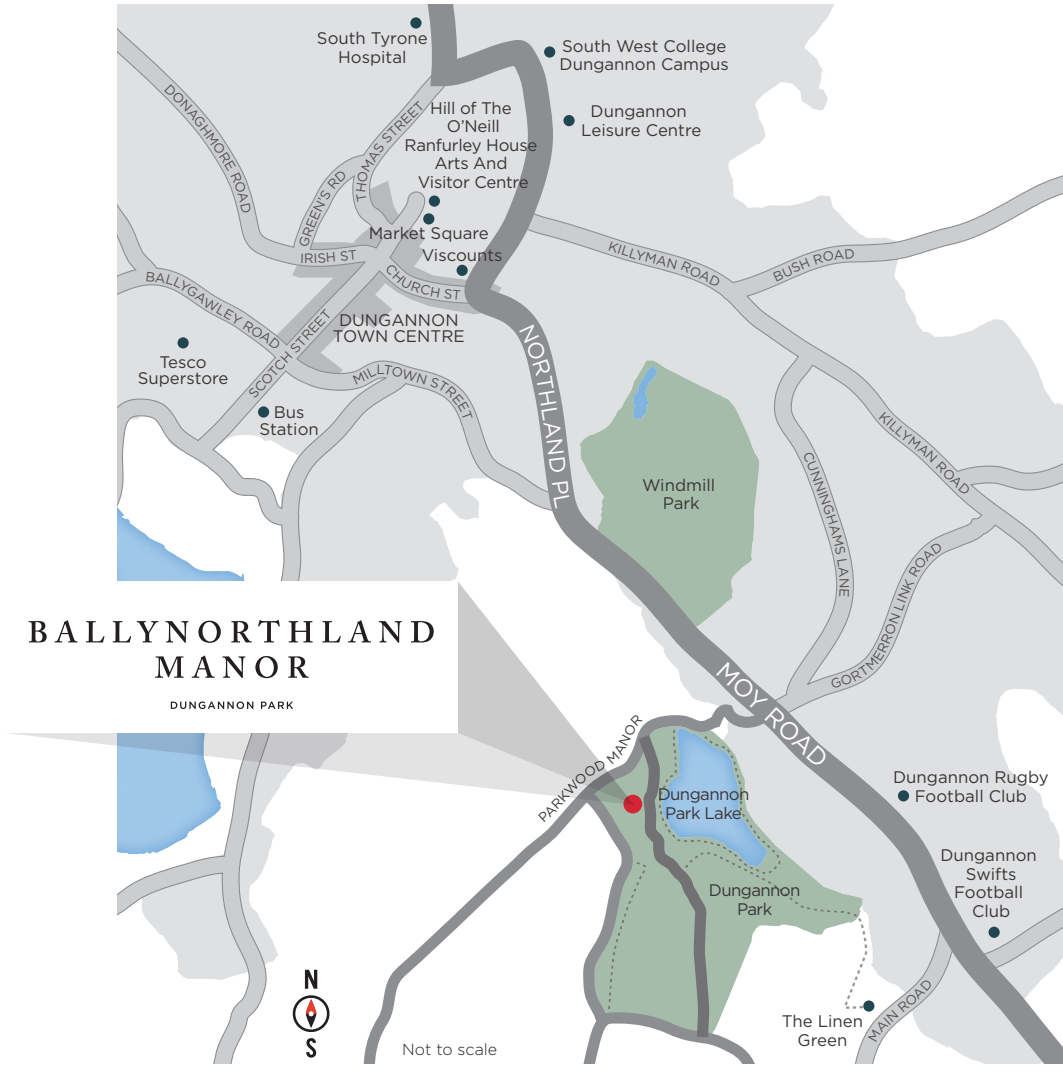


Actual photographs of The Stables

Location Map



Travelling Distances



By Foot

- 3 Minutes ● Dungannon Park
- 10 Minutes ● Windmill Park
- 12 Minutes ● The Linen Green
- 22 Minutes ● Dungannon Bus Station
- 24 Minutes ● Dungannon Leisure Centre
- 25 Minutes ● Tesco Superstore

By Car

- 1 Mile ● M1 Motorway
- 31 Miles ● Omagh
- 31 Miles ● Lisburn
- 40 Miles ● Belfast
- 40 Miles ● Belfast International Airport
- 45 Miles ● George Best Belfast City Airport

SALES REPRESENTATION



The Dyehouse,
Linen Green, Dungannon,
BT71 7HB

Phone: 028 8788 0080
Email: dungannon@maisonni.com

www.maisonni.com

www.ballynorthlandmanor.com

ARCHITECT



www.warwickstewart.co.uk

Email: info@warwickstewart.co.uk

DEVELOPER



www.strand-homes.co.uk

Email: info@strand-homes.co.uk

CONTRACTOR



www.tealrockproperties.com

The details enclosed do not constitute any part of an offer or contract. None of the statements contained in this sales brochure are to be relied upon as statements or representations of fact and any intending purchaser must satisfy themselves by inspection or otherwise as to their correctness. Neither the vendor, the selling agents, or any person employed in the companies has any authority to make or give any representation or warranty whatsoever in relation to these properties. All dimensions are approximate and 3D computer generated images are for illustration purposes only, both of which may be subject to change.

Copyright notice: All rights reserved. The contents of this brochure may not be reproduced, copied, redistributed, or otherwise made available in whole or part without the prior written consent from the developer.

